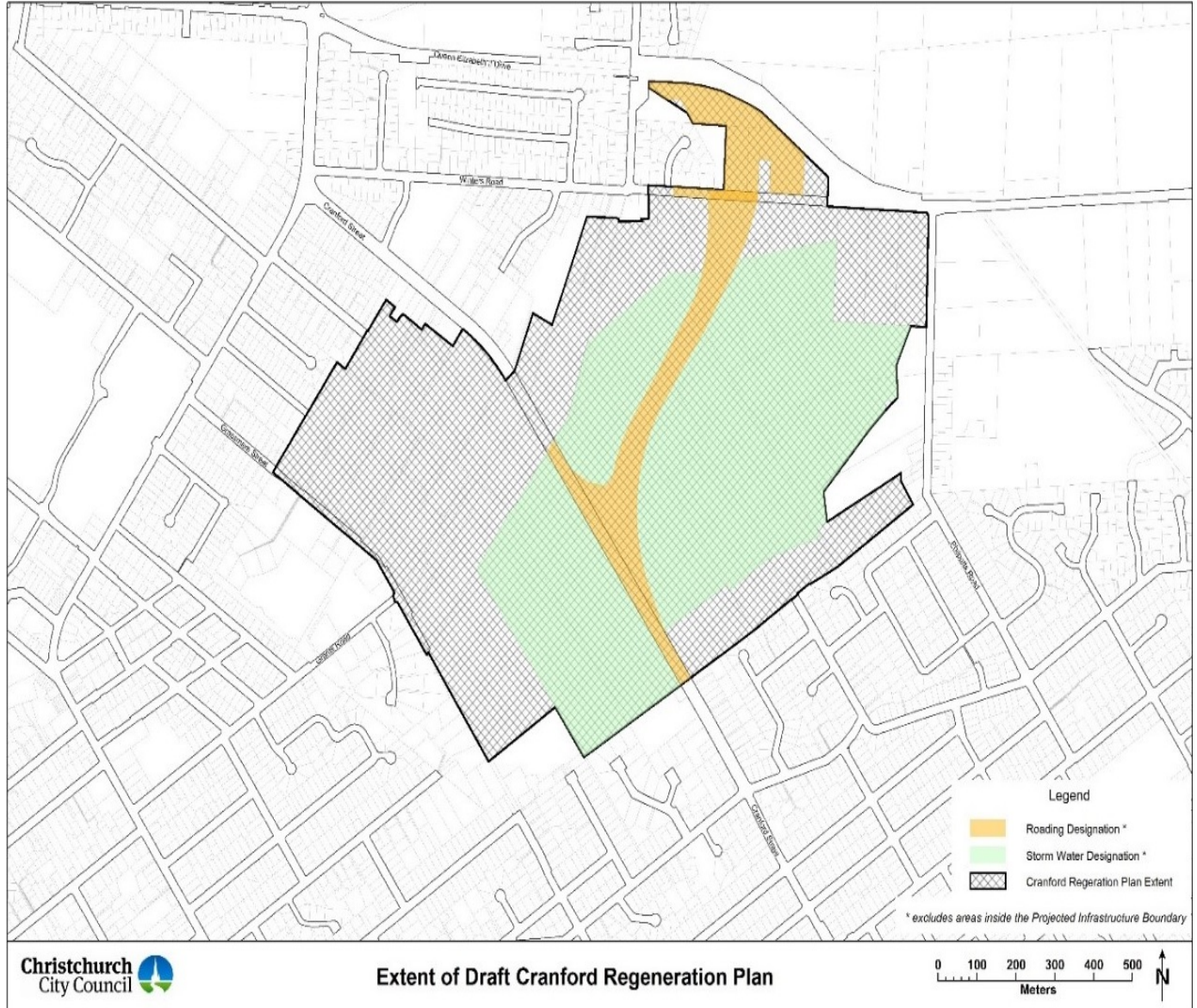


Greater Christchurch Regeneration—Cranford Regeneration Plan Outline

Pursuant to section 31 of the Greater Christchurch Regeneration Act 2016, the Minister supporting Greater Christchurch Regeneration has approved the Cranford Regeneration Plan Outline (“Outline”) for the Christchurch City Council to develop a draft Cranford Regeneration Plan. The area of the draft Cranford Regeneration Plan is shown in the following map:



The objective of preparing the draft Cranford Regeneration Plan is to assist regeneration of greater Christchurch principally by investigating the appropriateness of residential development at the edges of the Cranford Basin. The draft Cranford Regeneration Plan may propose to amend the Canterbury Regional Policy Statement and the Christchurch District Plan and any Plans and any Resource Management Act 1991 documents necessary to facilitate residential development in the Cranford Basin. The Christchurch City Council will develop the draft Cranford Regeneration Plan and undertake public engagement, including notifying an opportunity for written comments. The Christchurch City Council intends to submit a draft plan to Regenerate Christchurch in May 2017.

The Outline for the Cranford Regeneration Plan can be viewed on the Christchurch City Council website at www.ccc.govt.nz and copies are available at the Papanui Library and the Redwood Library.

Dated this 23rd day of December 2016.

IVAN IAFETA, Chief Executive, Regenerate Christchurch.